

810-632-5200
WWW.CROMAINE.ORG

Registration for November programs begins **Thursday, October 24 @ 9:00 am.**

LIBRARY HOURS

Monday - Thursday: 9 am - 8 pm
Friday - Saturday: 10 am - 5 pm
Sunday: 12 pm - 5 pm

LIBRARY CLOSINGS

The Library closes at 6:00 pm on **Wednesday, November 27** and will be closed all day on **Thursday, November 28** and **Friday, November 29** for the Thanksgiving Holiday.



Scan here for a full listing of our events and programs!

PROGRAM KEY

D DROP-IN

No registration necessary

R REGISTER

Register online or by phone

T TICKETED EVENT

Pick up your tickets at the Youth desk before entering; capacity limited to 20 participants

V VIRTUAL

See the online calendar for details

NOVEMBER FEATURES

R **CROMAINE CARES: RED CROSS BLOOD DRIVE IN PARTNERSHIP WITH HARTLAND LION'S CLUB**

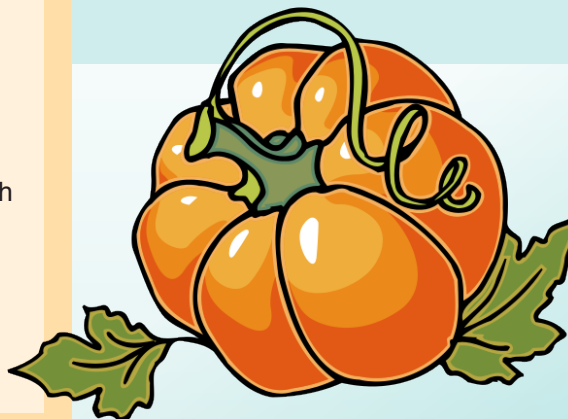
Friday, Nov. 15
11:00 am - 4:00 pm
Register in advance at redcrossblood.org/give, or call 1-800-RED-CROSS.

D **FRIENDS OF CROMAINE LIBRARY PIE SALE**

Wednesday, Nov. 27
10:00 am - while supplies last!
Buy a pie the Wednesday before Thanksgiving to help raise funds to support the Friends of Cromaine Library! First come, first served, and no preorders. \$15 for all pies. Pies sell out fast!

D **HARTLAND COMMUNITY COUNCIL VINTAGE CHRISTMAS IN THE VILLAGE**

Saturday, Nov. 30 @ 4:30 pm
Join the Hartland Area Community Council for holiday music on the Kilgen Organ, carolers, hot cocoa, walking history tours, and the official lighting of the Christmas Tree at the Hartland Music Hall. More information available at hartlandcommunitycouncil.org/events.



ALL AGES

CROMAINE CREATORS

Sept. 1 - Nov. 30, 2024
Submit your art or writing to have it included in our quarterly newsletter!

FAIRYTALE WRITING AND ART CONTEST

Friday, Nov. 1 through Friday, Nov. 22
Create your own fairytale! See the online calendar for details.

ARTS AND CHATS

Mondays, Nov. 4 & 18 @ 6:00 pm
Work on projects and connect with fellow artists.
R **Nov. 4:** Make a book page banner!
D **Nov. 18:** Bring your own craft!

D OZ PARTY

Saturday, Nov. 16,
12:00 pm through 2:00 pm
Wizard of Oz-themed crafts and activities.

R FAMILY PUZZLE PANDEMONIUM

Wednesday, Nov. 27 @ 11:00 am
Small groups compete to complete the same puzzle.

D MOANA PARTY

Saturday, Nov. 23
12:00 pm through 2:00 pm
Celebrate the release of Moana 2!

PRE-K

Ages 0 through 5

D PLAYDATE AT THE LIBRARY

Fridays, Nov. 1 & 15 @ 10:00 am
Lightly structured and free play.

T BABY STORYTIME

Monday, Nov. 4 @ 10:00 am
Songs, rhymes, stories, and fun!

R TODDLER TIME

Tuesdays, Nov. 5 & 12 @ 10:00 am
Read, sing, and play alongside your two year old!

R PRESCHOOL STORYTIME

Wednesdays, Nov. 6 & 13
@ 10:00 am

Thursdays, Nov. 7 & 14
@ 10:00 am

Read, sing, and play alongside
your 3-5 year old!

T BABY PLAYTIME

Monday, Nov. 11 @ 10:00 am
Open-ended playtime.

R HOW TO CATCH A DINOSAUR STORYTIME AND CRAFTS

Monday, Nov. 18 @ 4:30 pm
A kindergarten readiness initiative
for preschoolers to practice their
skills. For ages 4-5.

R PRESCHOOL YOGA

Thursday, Nov. 21 @ 10:00 am
Yoga for ages 3-5.

YOUTH Kindergarten through 4th grade

R SQUISHMALLOW PAINT AND SIP

Thursday, Nov. 7 @ 6:00 pm
Sip some juice & paint your
favorite squishmallow!

R OWL DIARIES PARTY

Thursday, Nov. 14 @ 6:00 pm
Activities based on the
Owl Diaries book series.

R TAIL WAGGIN TUTORS

Wednesday, Nov. 20 @ 6:00 pm
Practice reading with a canine friend!

R ELEMENTARY BOOK CLUB

Tuesday, Nov. 26 @ 6:00 pm
Discuss Squish by Jennifer Holm
and enjoy crafts and activities.

YOUTH + TWEEN

1st through 7th grades

R HOMESCHOOL DISCOVERY CLUB

Friday, Nov. 1 @ 2:30 pm
Hands-on activities and fun!

D CRAFTY KIDS

Wednesday, Nov. 6 @ 5:00 pm
Create something unique!

R POKEMON TRAINERS CLUB

Thursday, Nov. 21 @ 6:00 pm
Pokemon-themed activities.

TWEEN 5th through 7th grades

R DIY SQUISHMALLOWS

Tuesday, Nov. 5 @ 6:00 pm
Make a squishmallow-inspired
plushie.

R DIY MUGS AND HOT COCOA CONES

Tuesday, Nov. 19 @ 6:00 pm
Make a sharpie mug & hot
cocoa cone!

R TWEEN BOOK CLUB

Monday, Nov. 25 @ 6:00 pm
Discuss Spy School by
Stuart Gibbs.

TWEEN + TEEN

5th through 12th grades

R TWEEN TAKE-OUT BOXES

Thursday, Oct. 31 through
Wednesday, Nov. 6
Receive a box with library books
and other surprises! This month's
theme: Indigenous authors or
historical fiction.

TEEN 8th through 12th grades

D TAB (TEEN ADVISORY BOARD)

Thursday, Nov. 7 @ 3:30 pm
Brainstorm program ideas, talk
about books, work on projects,
snack, & chat.

R BIZARRE BOARD GAMES

Thursday, Nov. 14 @ 3:30 pm
These aren't your grandparents'
board games!

R OTAKU LEAGUE

Thursday, Nov. 21 @ 3:30 pm
Sample a new anime &
Japanese snack!

ADULT

R RECIPE CLUB AND POTLUCK

Friday, Nov. 1 @ 1:00 pm
Bring a dish and the recipe!

R TECH TIME

Tuesday, Nov. 5 @ 2:00 pm
Other Dates Available Upon Request
One-on-one help with your
electronic device.

D CROMAINE LIBRARY WEBSITE TOUR

Wednesday, Nov. 6 @ 1:00 pm
Explore Cromaïne's new website
at the Hartland Senior Center!

R DARK CORNERS OF MICHIGAN HISTORY

Wednesday, Nov. 6 @ 6:00 pm
A photographic expedition of
Michigan's creepiest historic prisons.

R **V** RESUME REVIEW WITH MICHIGAN WORKS!

Monday, Nov. 11 All Day
Call 517-552-2106 or email
psudbay@mwse.org to arrange an
appointment with Michigan Works!
resume expert, Patty Sudbay.

R DIY BATH SALT CRAFT

Monday, Nov. 11 @ 6:30 pm
Make bath salts for a spa day at home!

R YOGA WITH DEBBIE

Thursday, Nov. 14 @ 10:00 am
Tuesdays, Nov. 19 & 26 @ 6:30 pm
A relaxing yoga session.

R ALE TOGETHER NOW

Wednesday, Nov. 20 @ 6:30 pm
Join Michelle for fun, facts and
samples! Must be 21 or older.

R **V** MEDICARE QUESTIONS? THE LIVINGSTON COUNTY MMAP TEAM HAS ANSWERS!

Monday, Nov. 25 @ 6:00 pm
The Michigan Medicare/Medicaid
Assistance Program provides
unbiased information/assistance to
beneficiaries and caregivers.

BOOK CLUBS

D MYSTERY BOOK CLUB

Tuesday, Nov. 12 @ 6:30 pm
Long Time Gone by Charlie Donlea.

D NON-FICTION BOOK CLUB

Thursday, Nov. 14 @ 6:30 pm
The Song of the Cell: An Exploration
of Medicine and the New Human by
Siddhartha Mukherjee.